



# Flow 03 – User records a Program

Optimum  
online

## Description

1a. The user is viewing the TV Listings screen and selects a program (continue to #2)

1b. The user is viewing the TV Listings screen and swipes the right side arrow of the first program (continue to #6)

2. The user is directed to the Program Details screen. The user selects the Record This Episode button.

3. The user is directed to the Record Episode screen. The user selects the Record Episode button.

4. A popup displays confirming the program and episode scheduled to record. The user selects the OK button.

5. The user is returned to the TV Listings screen that they accessed the program from. A red dot displays next to the selected program, indicating that it is scheduled to record. [End Flow]

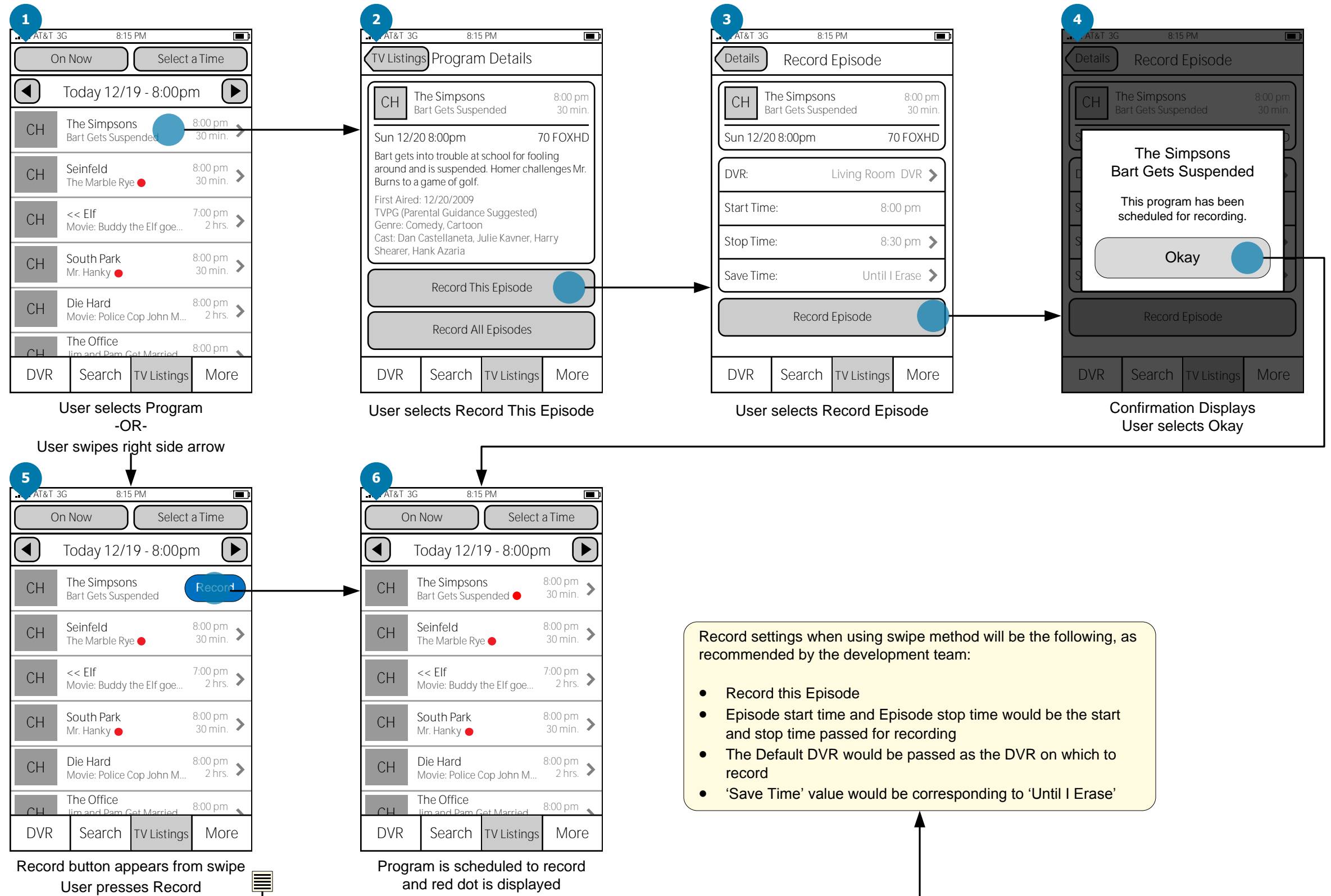
6. A record button is revealed from the user's swipe. The user selects the Record button.

7. After the Record button has been selected, a red dot displays next to the selected program, indicating that it is scheduled to record. The record button is then concealed. [End Flow]

## Requirements

- 3.2.1 Browsing
- 3.2.4 Program Details
- 3.3.1 Record Single Episode (1-Click)
- 3.3.2 More Options
- 3.3.6 Confirmation

## Wireframe Flow





# Flow 09 – User deletes a scheduled program/scheduled series

Optimum online

## Description

- 1a. The user is viewing the Scheduled Recordings in the DVR section. The user selects the first program. (continue to #2)
- 1b. The user is viewing the Scheduled Recordings in the DVR section. The user swipes the right side arrow of the first program (continue to #6)
- 2a. The user is directed to the Program Details screen. The program is part of a series. The user selects the Delete button. (continue to #3)
- 2b. The user is directed to the Program Details screen. The program is NOT part of a series. The user selects the Delete button. (continue to #5)
- 3. A popup displays confirming the deletion of the selected recording and the recording of its series. The user selects the Yes button.
- 4. The user is returned to the Scheduled Recordings screen with all scheduled recordings associated with the series no longer present. **[End Flow]**
- 5. The user is returned to the Scheduled Recordings screen with the deleted recording no longer present. **[End Flow]**
- 6a. A Delete button is revealed from the user's swipe. The user selects the Delete button. The program is part of a series (continue to #3)
- 6b. A Delete button is revealed from the user's swipe. The user selects the Delete button. The program is NOT part of a series (continue to #5)

## Requirements

- 3.2.4 Program Details
- 3.4.1 Scheduled Program list
- 3.4.2 Delete

## Wireframe Flow

